

Prototype Affordable\_Senior  
1250 - 2050 gsf

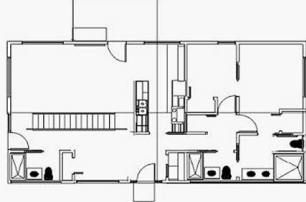


Prototype Affordable\_Senior  
Roofs incl Hip, Flat, Shed, Gable

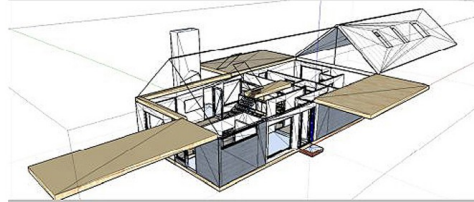


Prototype Affordable\_Senior  
Gable level from 200gsf to 800 gsf

***Volumetric SIPs Prefab Residential Design System\_Detached + MultiFamily Lowrise***  
***All Images (c) 2024 Stephen Synakowski Architects***



Affordable\_Senior 2 BR 3 BA w/Stair  
1250 gsf main level, 600 gsf gable level



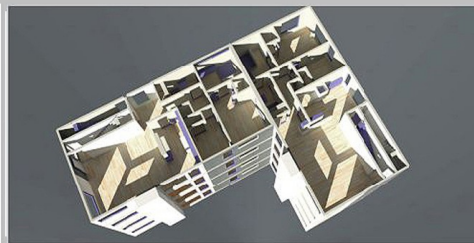
Affordable\_Senior w/Gable Detail  
1850 total gsf w/ double height living



Affordable\_Senior Demising  
Showing open stair into gable



Protype Affordable\_Senior 3 BR 3 BA  
1250 gsf w/ 2 car gar



8 Flat\_2 BR 2 BA walkup\_2 exits ea  
8000 net gsf\_10000 gsf Building



Affordable\_Senior showing Gable  
1850 gsf w/ Double Height Living



Prototype Hip Roof at Garage  
1250 gsf w/ 625 gsf garage addition



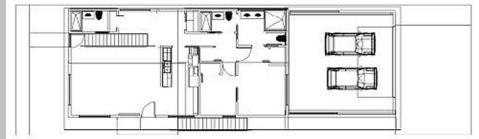
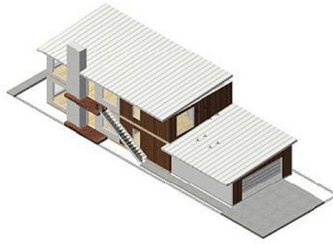
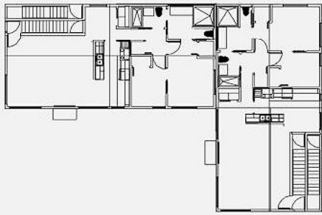
8 Flat\_4 du tall, stacked, 2 exits ea  
1000 sf net/du 2000 sf net/ livable



8 Flat\_4 du tall, stacked, 2 exits ea  
1250 gsf/du 2500 gsf/floor total

***Engineered Design Systems | Structural Insulated Panels\_SIPs***



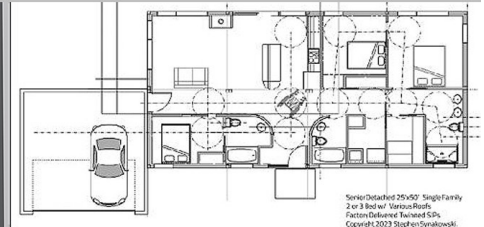


2,4,6, or 8 Flat \_ 2 Exits ea  
1000 sf net du/ 2000 sf net / livable

1 or 2 du \_Custom Residential  
2500 gsf total plus 625 gsf garage

1 or 2 du \_Custom Residential  
Roofs incl. gable, hip, flat, shed

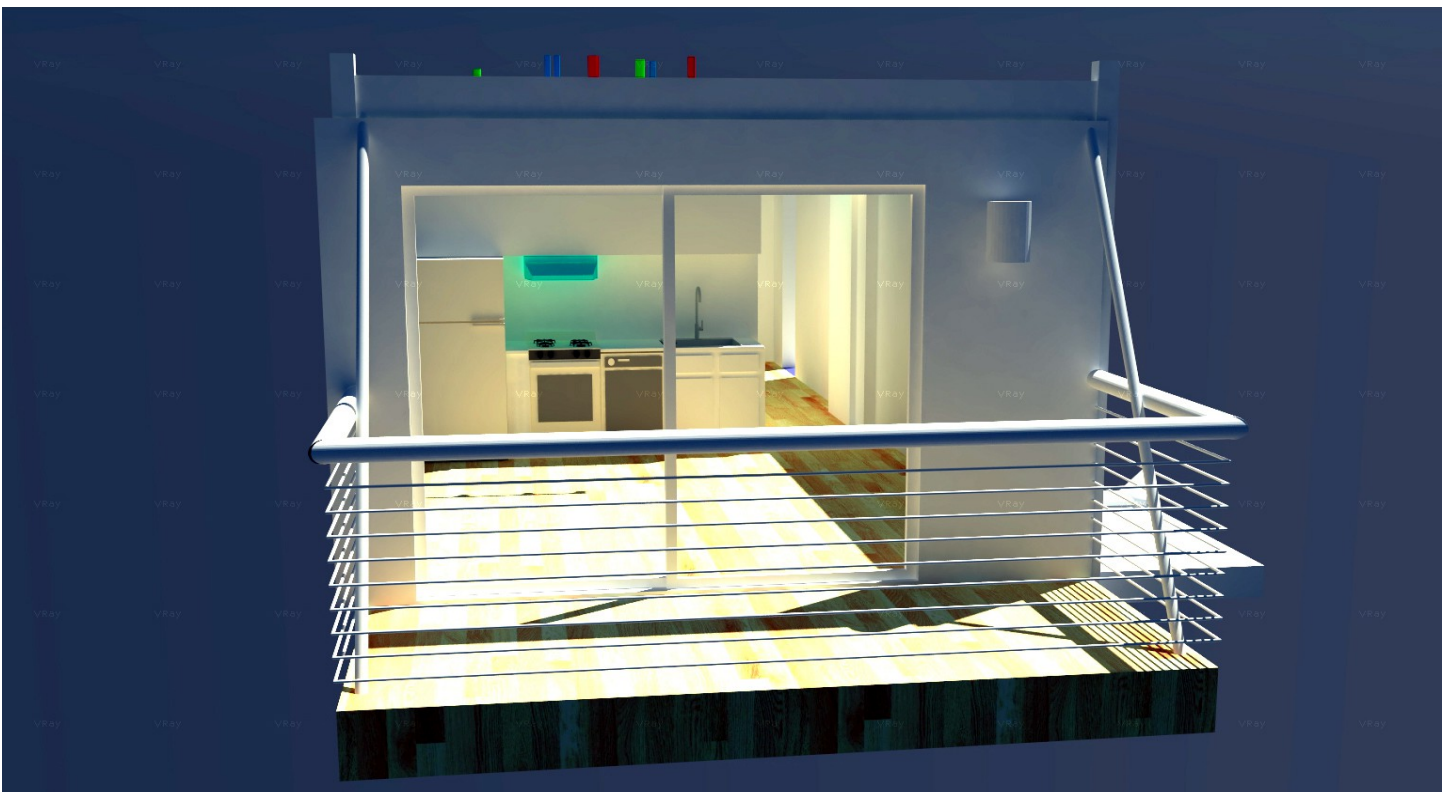
***Volumetric SIPs Prefab Residential Design System\_ Detached + MultiFamily Lowrise***  
***All Images (c) 2024 Stephen Synakowski Architects***



1 or 2 du \_Custom Residential  
2500 gsf total \_625 gsf gar

Townhomes. 10 dus w/ garages  
1000 sf net du \_10000 sf net for PUDs

Prototype Affordable Senior 3 BR 3 BR  
1250 gsf du \_625 gsf gar\_ ADA complian



***Engineered Design Systems | Structural Insulated Panels\_ SIPs***

Stephen Synakowski RA, NCARB, AISC  
150 88<sup>th</sup> Street, Ste. D4  
Brooklyn, New York 11209  
609.213. 4733

[www.tectonx.net](http://www.tectonx.net)

[www.stephensynakowskiarchitect.com](http://www.stephensynakowskiarchitect.com)

